

Terms and Conditions

We reserve the right to cancel this trip due to lack of subscription. In the event of cancellation of the trip in its entirety, a full refund of all deposits will be made to passengers enrolled at the time of cancellation. Tour price is based on the value of the dollar and the cost of airfare and is subject to change without notice. Extensions are usually available, but must be requested when booking the tour. Any changes in airfare booking may result in a processing fee. It may be possible, that due to unforeseen events, conditions, or changes in airline schedules, the land portion of the trip may be extended or shortened. Any savings realized by such occurrences will be refunded, however any extra expenses incurred must be borne by the client. Trip cancellation insurance is available. This low-cost protection can save you money if you are forced to cancel or alter your trip for a medical reason only. You will be mailed trip cancellation insurance information with the brochure or upon receipt of your deposit.

Responsibility: Priscilla Woman's Tours, Ed-Ventures, Inc., their officers and employees, tour hosts, or any other persons or vendors connected with the tour shall not under any circumstances be liable to the client under or by reason of this agreement directly or indirectly for any accidents, injury, delay, damage, or inconvenience caused to the client by negligence of others, by malfunctions of transportation systems or equipment, by acts of war, terrorism, or rebellion, strikes, theft, itinerary changes, extreme weather conditions, or cancellations, and the client hereby releases the above mentioned corporation and persons from any and all such liability. The airline(s) concerned are not held responsible for any act, omission, or event during the time passengers are not on their planes or conveyances. The passenger's contract in use by the airlines concerned, when issued, shall constitute the sole contract between the airlines and the purchaser of this tour and/or passenger. Any and/or all transportation companies herein mentioned shall not have nor incur any responsibility to any traveler aside from their liability as common carriers. Air and land costs are subject to change without notice. **Air transportation is via special, non refundable airfare. Any additional airfare assessments made by the airlines for any changes whatsoever shall be the responsibility of the client.** Other rules may also apply. Services of any A.R.C. or I.A.T.A. carrier may be used in conjunction with this tour. If there is a change in air prices and/or currency exchange rates, we reserve the right to adjust prices.




*The Priscilla
Woman's Tours*

Contact: Cindi Brodhecker
263 Ridge Avenue • Ephrata PA 17522
Tel (717) 733-1655 • Fax (717) 733-3670
cindi@priscillawomantours.com

6.20.11 land

This shell was published by Ed-Ventures, Inc. Photographs shown on this brochure are courtesy of Israel Tourism and do not necessarily represent sites visited on the tour.


*The Priscilla
Woman's Tours*

ISRAEL

"God's Holy Land"

Sea of Galilee • Bethlehem • Jerusalem

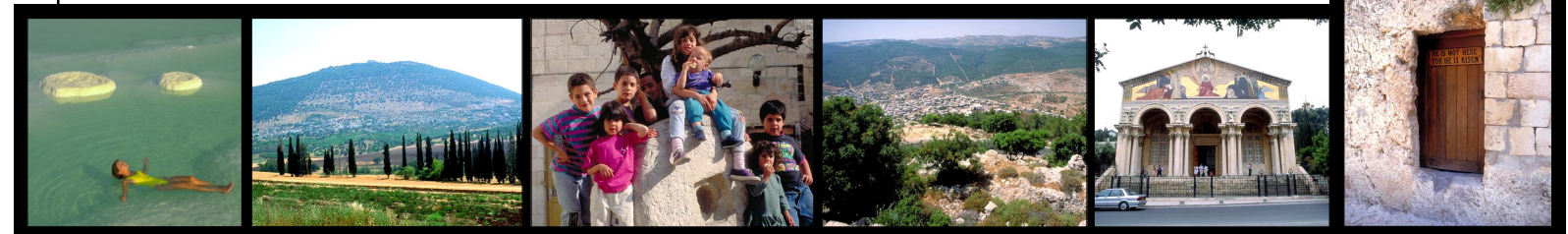
May 29 - June 7, 2012



Karen Knight of Heartsongs Ministries invites you on a tour of "God's Holy Land" including a benefit performance in Bethlehem.

Karen Knight is a Concert Artist, Inspirational Speaker, Dramatic Story Teller who brings the Gospel to Life. Heartsongs Ministries, Inc. is a non-profit organization dedicated to glorifying God by presenting truths of the gospel of Jesus Christ through musical worship and the spoken word. This ministry comes alongside the local church in uplifting, encouraging and equipping believers while also reaching out to a lost and needy world.

*Women of Noble Character, Faith, and Joy
Traveling Together for Fellowship, Spiritual Enrichment, and Friendship.*
This special tour is open to everyone~men and women!



ISRAEL "God's Holy Land"

May 29 - June 7, 2012

KK112

Tour Price: \$2,399 per person
Land Only

Price based on 25 participants and double occupancy

Single supplement=\$425

Tuesday, May 29, 2012 • Depart

Our journey begins as we board our flight for the Promised Land.

Wednesday, May 30, 2012 • Arrival in Tel Aviv

Upon arrival at Ben Gurion International Airport in Tel Aviv, we are met by our tour leader and coach driver. We then drive to **Jaffa** the ancient seaport from which the Prophet Jonah fled from God (Jonah 1:2) and the city where Peter stayed with Simon the Tanner and restored Tabitha (Dorcas) to life (Acts 9:36-43). Afterwards we transfer to our hotel for check-in, dinner, a group meeting and our first opportunity to get acquainted with Karen Knight. She may even sing us a lullaby before a good night's sleep. **D**

Thursday, May 31, 2012 • Tiberias

This morning we visit **Caesarea** to explore this Roman bridge-head to the East, which became the Christian springboard to the West. It was here that Cornelius the Centurion and his household were saved and baptized (Acts 10). It was also here that Paul made his defense before Festus and King Agrippa prior to his final journey to Rome (Acts 25 & 26). Here on the stage of the Roman theater Karen performs for our group as performers once did centuries ago. Then we proceed to **Nazareth**, to visit part of the ancient village and to see the **Church of the Annunciation** where Karen will make an appearance as Mary. We view Mount Tabor where Barak awaited Sisera (Judges 4) and which many believe to be the site of the Transfiguration (Matt. 17). We go on to **Cana**, commemorating Jesus' transformation of water into wine (John 2). For those who would like, they may renew their vows. We end the day in Tiberias, our home for the next two nights. **B/D**

Friday, June 1, 2012 • Tiberias

Our morning begins after a breakfast buffet. We begin with a **boat ride** across the Sea of Galilee and the stop to see the **2000 year old Jesus boat**. Continuing on, we drive around the Sea of Galilee, passing the area of Magdala, home of Mary Magdalene. We enter the 2,000 year old remains of **Capernaum** (Lk. 4:31-37) and stand in what is left of the synagogue in which our Lord ministered and see **Peter's house**. We visit the traditional site where Jesus preached His Sermon on the Mount (Matt. 5-7); **Tabgha**, commemorating the feeding of the 5,000 (Lk. 9); **Mensa Christi**, where the Lord appeared to the disciples after the resurrection (Jn. 21); and the country of the Gadarenes (Matt. 8:28-34). We continue traveling north into the Golan Heights area where we discover the Road to Damascus (Acts 9) and view Mount Herman at Caesarea Philippi, where Peter confessed "You are the Christ" (Matt. 16:13-20). **B/L/D**

Saturday, June 2, 2012 • Bethlehem

After breakfast, we stop at the **Jordan River** for a time of spiritual blessing and an opportunity for baptismal remembrance. Then we journey south to Jerusalem, as our motor coach takes us through the Jordan Valley. Our first stop is to visit the **tel of**

Bet Shean, where the bodies of King Saul and his sons hung from the city gates (I Sam. 31). We spend some time at the luxurious Roman city of **Bet Shean**. We visit **Harod Spring** (Gideon's Spring), where Gideon chose his army of 300 by observing how they drank from the spring (Jg. 7). Our next stop is **Jericho**, the ancient Canaanite city destroyed by the power of God (Josh. 5-6). It is the oldest known inhabited city in the world. It was in Jericho that Jesus encountered Zacchaeus (Lk. 19). Waters from the Spring of Elisha (II Kings 2) are also in this area. After stopping at the **Valley of the Shadow** in the Judean hills, we travel to Bethlehem. **B/D**

Sunday, June 3, 2012 • Bethlehem

Today, we see the **shepherd's fields** and **Christmas Church**. We also enjoy lunch with Christian friends in Bethlehem. This evening **Karen performs a benefit concert**. **B/L/D**

Monday, June 4, 2012 • Jerusalem

After breakfast, we continue on to Jerusalem. Our first stop is the **Pater Noster Church**, the traditional site where Jesus taught his disciples the Lord's Prayer (Lk. 11). Next, we visit the **Mount of Olives** (Lk. 19:28-40 & II Sam. 15:30-36). We see olive trees that date back to the time of Christ, the **Site of the Ascension** (Acts 1) and take time to pray in the **Garden of Gethsemane** (Matt. 26:36-56). Then we proceed to **Mount Zion** on the south side of Jerusalem, King David's city. We sing praises in the **Upper Room** (Lk. 22:7-38), view the **traditional tomb of King David**, and proceed to **Caiaphas, the High Priest's house**, (Jn. 18), where we walk through some of the ancient rooms. Then we proceed to Christian quarter of Jerusalem and walk part of the Via Dolorosa. **B/D**

Tuesday, June 5, 2012 • Jerusalem

We depart early for **Qumran**, the site where the *Dead Sea Scrolls* were discovered, and the tel of ancient Essene community. We continue south to visit **Masada**, the spectacular mountaintop fortress built by Herod, which is famous for being the last stronghold of the Jewish rebellion against the Romans. From the top of Masada, the Roman camps and siege ramp can still be seen. We continue to the shores of the **Dead Sea** to feel the saltiest water on earth as you float in the mineral filled water. We travel back to Jerusalem for dinner. **B/D**

Wednesday, June 6, 2012 • Jerusalem

Karen makes a surprise entrance this morning having just come from the tomb and sets the stage for the day. Our final day begins as we see a part of **Herod's temple** and pray at the **Western Wall**. We walk up onto the original temple mount platform where King Herod's temple stood and visit the **Dome of the Rock**. We walk through the **Old City**, visiting the **Pool of Bethesda** (Jn. 5), and viewing the shops and the unique way of life that these ancient customs and lifestyles have maintained. We proceed to **Pilate's Judgment Hall** in the **Fortress of Antonia** (Jn. 18:28—19:26). We see the games of the soldiers still etched in its stone floor, sense the agony of Christ's crucifixion at

Gordon's Calvary (Lk. 23:50—24:12) and experience the exhilaration and reality of the resurrection at the **Garden Tomb**. Our day ends today as we see a **scale model of Jerusalem** and review what we have seen in this holy city. Tonight we enjoy a farewell dinner. **B/D**

Thursday, June 7, 2012 • Return

We drive to the airport for our return to the United States. **B**



Karen Knight

Concert Artist, Inspirational Speaker, Dramatist

Karen is probably best known for one of her roles at **Sight & Sound's Millennium Theater** as Mrs. Noah in the renowned production **NOAH, THE MUSICAL**, in Lancaster, PA. In addition to her many roles at the theater, she has sung in churches, concerts and musical theater all over the United States and internationally. She has been a soloist for the *Franklin Graham Evangelistic Festival*, the *Las Vegas Symphony Orchestra*, the *International Baptist Church in Rome, Italy*, the *Pageant of Peace in our Nation's Capital*, the *Pennsylvania State Congressional Prayer Breakfast*, and for *Branson Fest in Branson, Mo.*

Recently, Karen was invited by the **Chaplain Corps of the US Army in South East Asia** to provide concerts for military troops and their families in Korea.

Currently she travels extensively as a concert artist, and as a speaker and dramatist with Heartsongs Ministries, Inc. **Audience members always comment that they are captured by her voice and captivated by her radiant Christian spirit. Karen's heart's desire is to draw people closer to Jesus Christ through music and the spoken word.**

Your Tour Includes:

- **Land transportation** via private, deluxe air conditioned motor coach
- **Accommodations** (double-occupancy) in superior tourist class and moderate first class hotels
- **Meals** as indicated in itinerary
- **Beverages** include juice, tea, coffee and water with breakfast; tea, coffee and water with dinner
- Services of a **professional tour manager** throughout tour
- **Admission** to all activities listed on itinerary
- **Luggage handling:** one piece per person at hotels
- All **taxes and tips** on land portion, including driver and tour manager

Your Tour Does Not Include:

- Round trip airfare and related taxes, fees and fuel surcharges
- Meals not indicated on itinerary
- Beverages except as listed above
- Items of a personal nature such as passport fees (*Passport must be valid for 6 months beyond return date*)
- Optional insurance for health, baggage and cancellation (*This insurance is available and recommended*)

Payment Schedule:

A deposit of \$500 per person is due with reservation. Final payment is due 90 days prior to departure date. Invoice will be sent out prior to final payment. Early registration is encouraged.

Currency:

Currency exchange rates fluctuate constantly. In the event of a significant drop in the value of the dollar, we reserve the right to add a currency surcharge to the price of the tour.

Refund/Cancellation Policy:

All cancellations must be in writing. The date of postmark will determine the amount of refund due. Refunds are based on the number of days prior to departure date. From the time of deposit to 100 days before departure, a \$100 administrative fee will be assessed. From 99-14 days, a \$300 cancellation penalty plus any unrecoverable deposits to ground suppliers as well as any penalties imposed by airlines (if applicable) will be assessed. Airline tickets once written are usually not refundable. Anyone canceling less than 14 days prior to departure will receive **no refund**. **Purchase of health, baggage and trip cancellation/interruption insurance is strongly encouraged.**

**Price will increase slightly if number of participants falls below 25*

Abbreviations for Meals: B=Breakfast L=Lunch D=Dinner

The Priscilla Woman's Tours

In partnership with Ed-Ventures, Inc. • 320 Elton Hills Dr NW • Rochester, MN 55901

Contact: Cindi Brodhecker • 263 Ridge Avenue • Ephrata PA 17522 • www.priscillawomantours.com

Tel (717) 733-1655 • Fax (717) 733-3670 • cindi@priscillawomantours.com